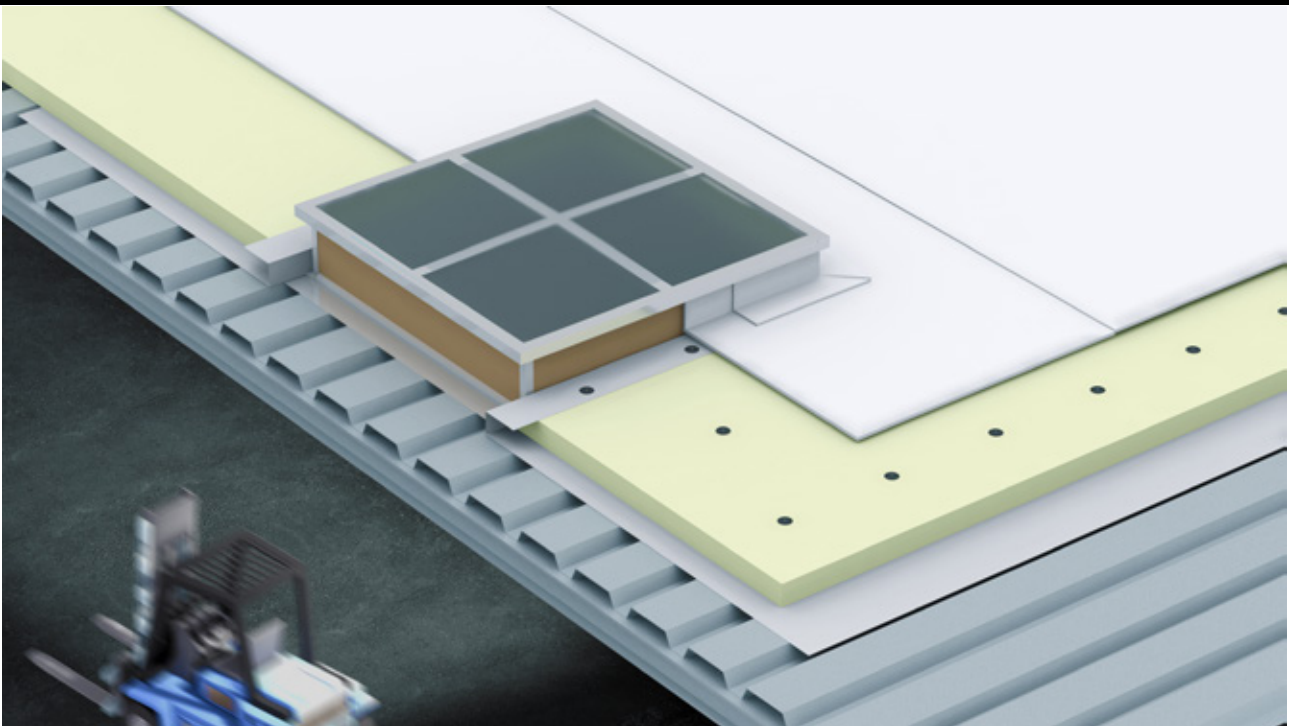


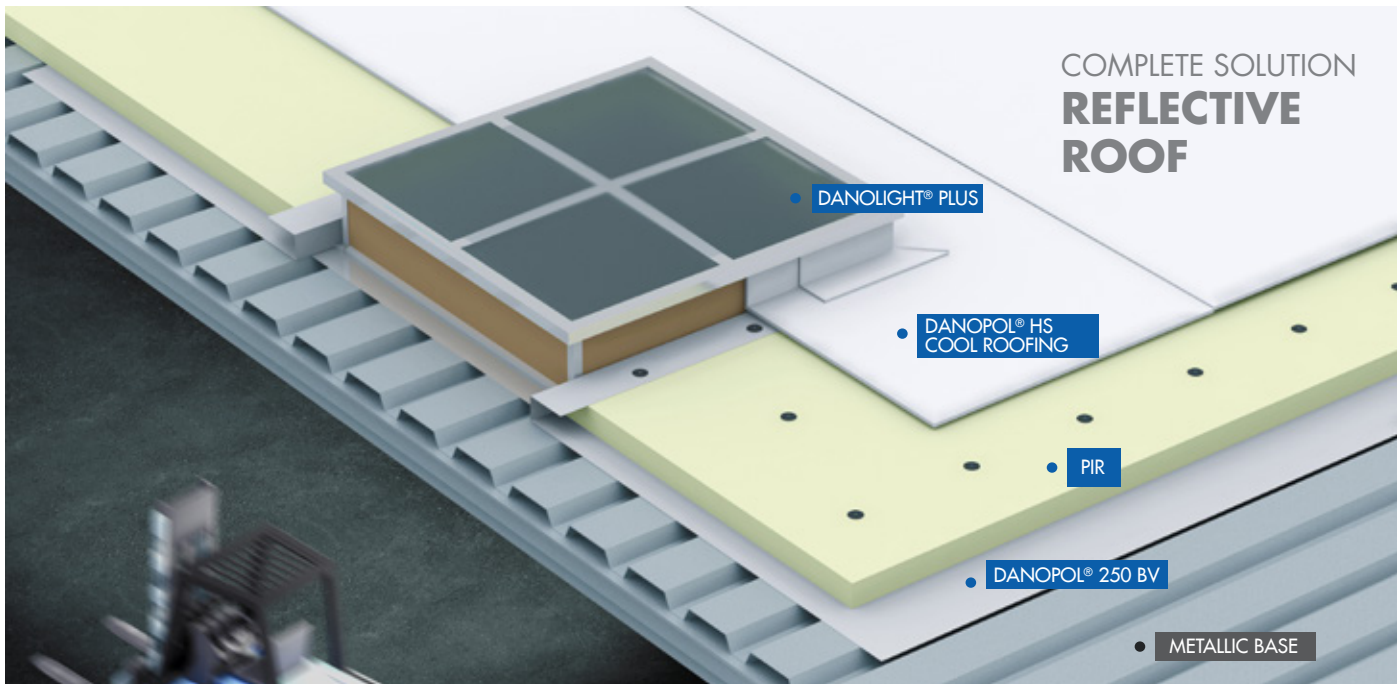
## REFLECTIVE FLAT ROOFS

COMPLETE COOL ROOFING SOLUTION TO IMPROVE ENERGY EFFICIENCY



**DANOSA REFLECTIVE ROOF SYSTEMS** are complete waterproofing and insulation solutions with a highly solar-reflective white surface that minimises the roof's absorption of heat. This reflective surface minimises absorption of heat by the thermal enclosure, thus helping buildings achieve both an energy savings and respect for our environment.

All component products of this solution are designed to ensure the building interior remains watertight, providing the building with an adequate thermal enclosure to limit energy consumption and to significantly help prevent it from heating up.



## COMPLETE SOLUTION REFLECTIVE ROOF

### ADVANTAGES:

- Complete waterproofing and lightweight thermal insulation system.
- Highly durable waterproofing system.
- Electromagnetic induction attachment system.
- Recyclable waterproofing system: ROOFCOLLECT®
- Ecological, HCFC-free thermal insulation system.
- Environmental impact over the product's life cycle: Environmental Product Declaration.
- High solar reflectivity.
- Construction system in accordance with sustainable certification: French Haute qualité environnementale, Spanish VERDE®, Portuguese LiderA®, American LEED®, British BREAM®.

- Systems technically evaluated by independent European organisations: French Centre Scientifique et Technique du Bâtiment (CSTB), Spanish Instituto Eduardo Torroja Ciencias de la Construcción (IETcc), British Board of Agrément (BBA).

### APPLICATIONS:

Types of buildings:

- Logistical buildings.
- Industrial buildings.
- Public buildings such as shopping centres.
- Public or private residential buildings.
- Health facilities such as hospitals and clinics.
- Educational facilities such as schools, day care centres and universities.
- Administrative and corporate buildings.

Function	Product	Description	Property	Value
Water vapour barrier	<b>DANOPOL® 250 BV</b>	Transparent, low-density polyethylene sheet, 250 µm thick.	Resistant to diffusion of water vapour	$\mu = 100.000$
Thermal insulation	<b>PIR</b>	Rigid, polyisocyanurate	Thermal conductivity	$\lambda = 0,026 - 0,028$ W/m·K
Water-proofing	<b>DANOPOL® HS COOL ROOFING</b>	White, flexible, highly durable synthetic PVC-p sheet, compliant to Environmental Product Declaration (EPD).	Reflective waterproofing	SRI = 94
Illumination and exhaust evacuation	<b>DANOLIGHT® PLUS</b>	Smoke and heat exhaust unit consisting of a thermally insulated galvanised steel base and cellular polycarbonate dome with an aluminium frame.	Reaction to fire	Bs1 d0