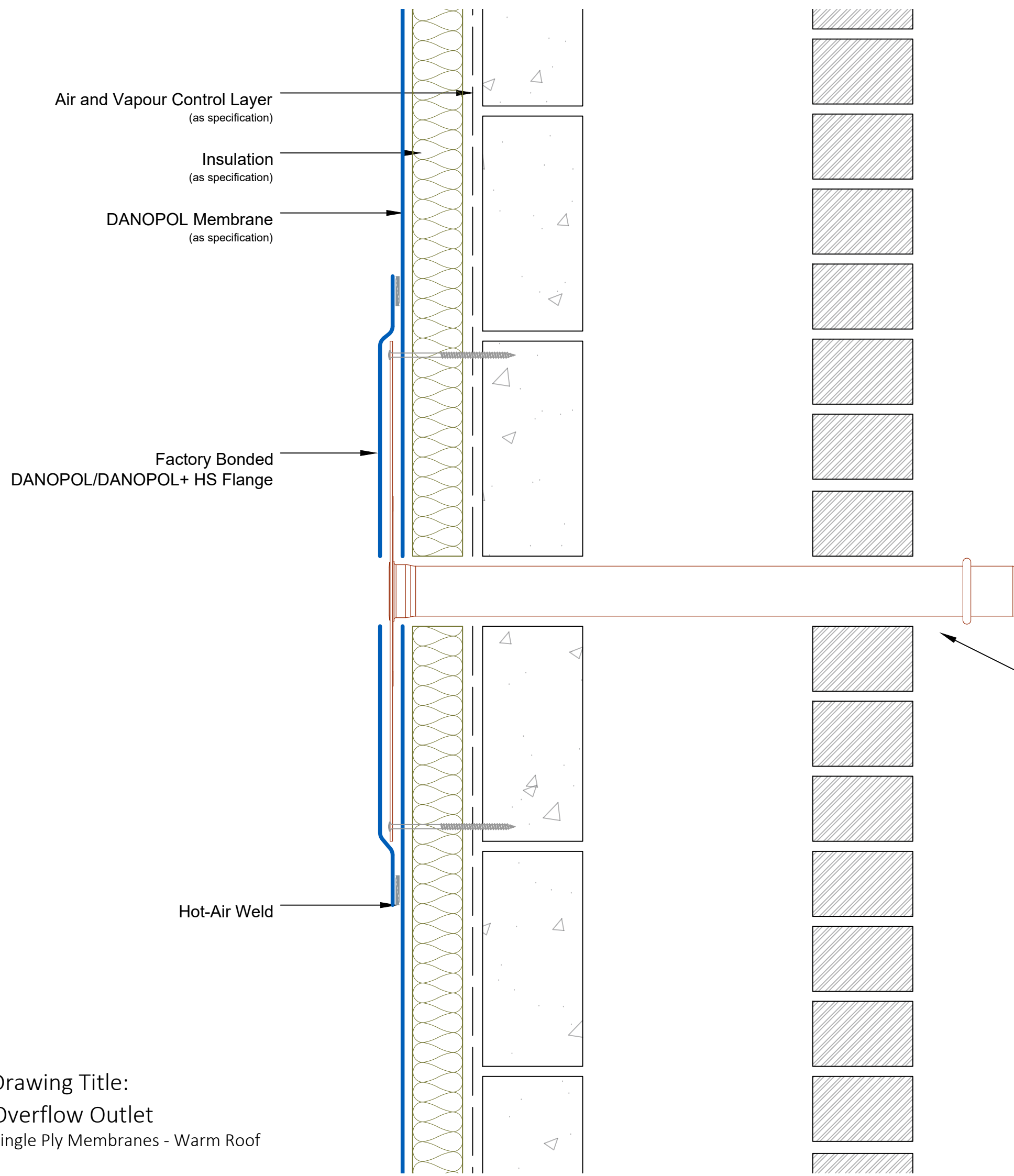


Disclaimer: Drawings produced by DANOSA UK should be considered non-scalable and for illustrative purposes only. Issued design principals form instructions for the installation of DANOSA UK materials only and should be considered as part of an overall design rather than in isolation. Product 'Technical Datasheets' are available for all DANOSA UK products and should be consulted in conjunction with all issued DANOSA UK installation instructions. Drawings are subject to copyright and should not be reproduced without permission.



Air and Vapour Control Layer  
(as specification)

Insulation  
(as specification)

DANOPOL Membrane  
(as specification)

Factory Bonded  
DANOPOL/DANOPOL+ HS Flange

Hot-Air Weld

**Drawing Notes:**

Structural substrates shown in this drawing are for illustrative purposes only.

All DANOPOL membrane hot-air welds should be between 30-40mm. Overlaps should provide sufficient cover to accommodate this requirement.

Overflow outlets are generally installed at no more than 50mm above the finished surface of the roof system where a level threshold detail exists, or no more than 70mm otherwise. The underlying base plate measures 70mm from the external edge to the outlet aperture, so may need to be cut on site when used on roof systems with level threshold details.

DANOSA overflow outlets are 50mm diameter and are supplied with a 600mm spigot.

Important Note:  
External finishes fall outside  
of DANOSA specification.

<b>Drawing Number:</b> DUK-S-(G)-302W	<b>Revision:</b> 01
<b>Date Drawn:</b> May 2018	<b>Author:</b> SL

Drawing Title:  
Overflow Outlet  
Single Ply Membranes - Warm Roof



**DANOSA UK Limited**

Tel: 0845 074 0553 | www.danosa.co.uk | uktechnical@danosa.com