

Disclaimer: Drawings produced by DANOSA UK should be considered non-scalable and for illustrative purposes only. Issued design principals form instructions for the installation of DANOSA UK materials only and should be considered as part of an overall design rather than in isolation. Product 'Technical Datasheets' are available for all DANOSA UK products and should be consulted in conjunction with all issued DANOSA UK installation instructions. Drawings are subject to copyright and should not be reproduced without permission.

Drawing Notes:

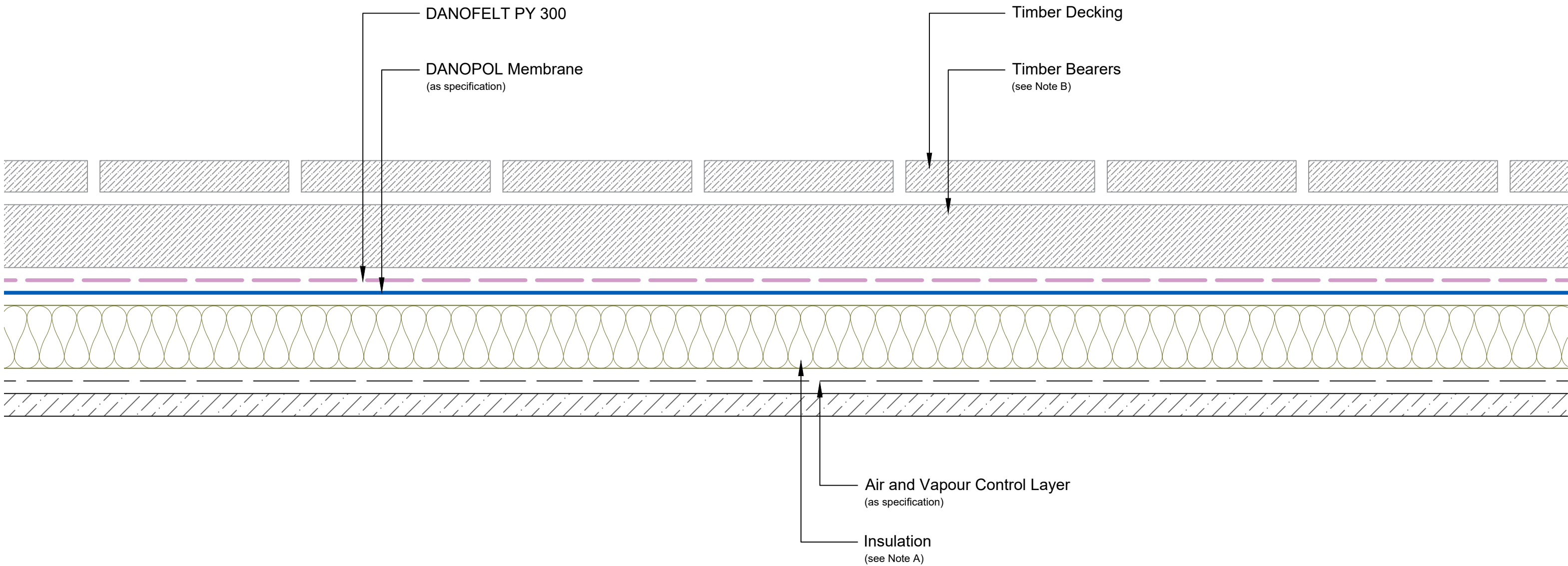
Structural substrates shown in this drawing are for illustrative purposes only.

Note A:

The selected insulation should be suitable to withstand the anticipated live and dead loadings. Compressive strength and compressive creep information is available on product Technical Datasheets.

Note B:

Timber bearers should be laid so that they do not inhibit free drainage of the roof system. If this cannot be avoided, then the bearers must sit on suitable support pads to allow free drainage underneath.



Drawing Number: DUK-S-(G)-203W	Revision: 00
Date Drawn: March 2017	Author: SL

Drawing Title:
Typical Cross Section with Timber Decking
Single Ply Membranes - Warm Roof

