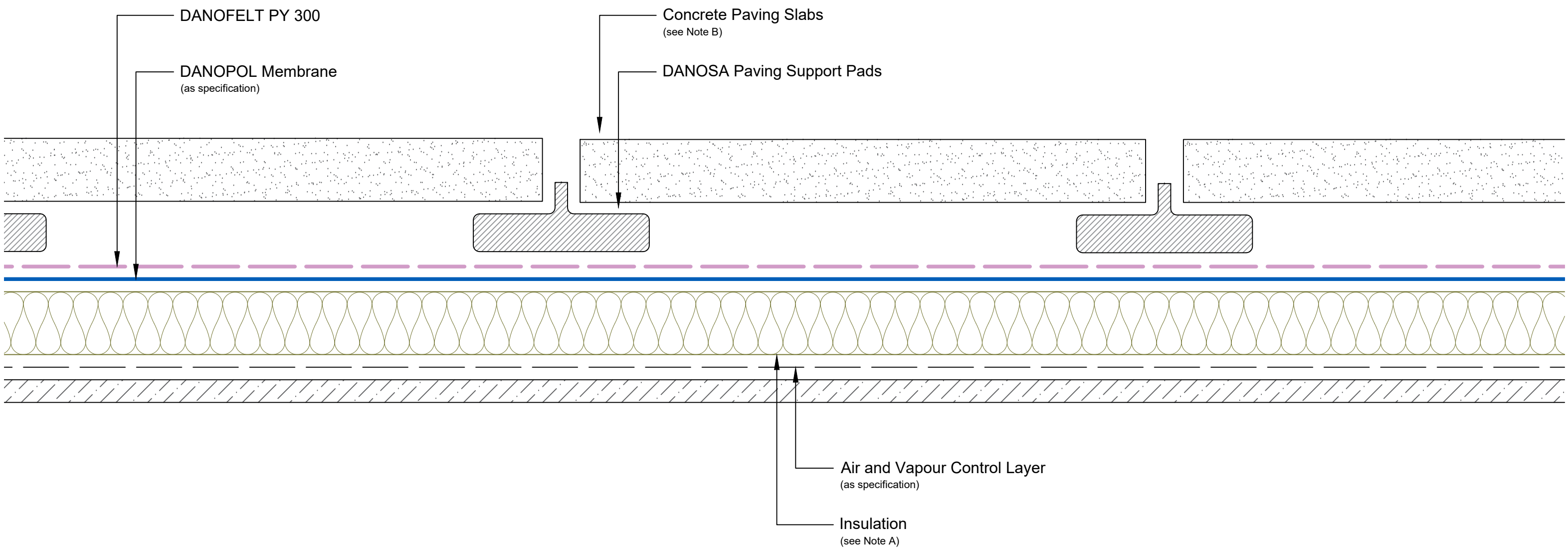


Disclaimer: Drawings produced by DANOSA UK should be considered non-scalable and for illustrative purposes only. Issued design principals form instructions for the installation of DANOSA UK materials only and should be considered as part of an overall design rather than in isolation. Product 'Technical Datasheets' are available for all DANOSA UK products and should be consulted in conjunction with all issued DANOSA UK installation instructions. Drawings are subject to copyright and should not be reproduced without permission.

Drawing Notes:
Structural substrates shown in this drawing are for illustrative purposes only.

Note A:
The selected insulation should be suitable to withstand the anticipated live and dead loadings. Compressive strength and compressive creep information is available on product Technical Datasheets.

Note B:
Paving slabs should be a minimum 50mm thick.



| | |
|--|------------------------|
| Drawing Number: DUK-S-(G)-202W | Revision: 00 |
| Date Drawn: March 2017 | Author: SL |

Drawing Title:
Typical Cross Section with Paving Slabs
Single Ply Membranes - Warm Roof