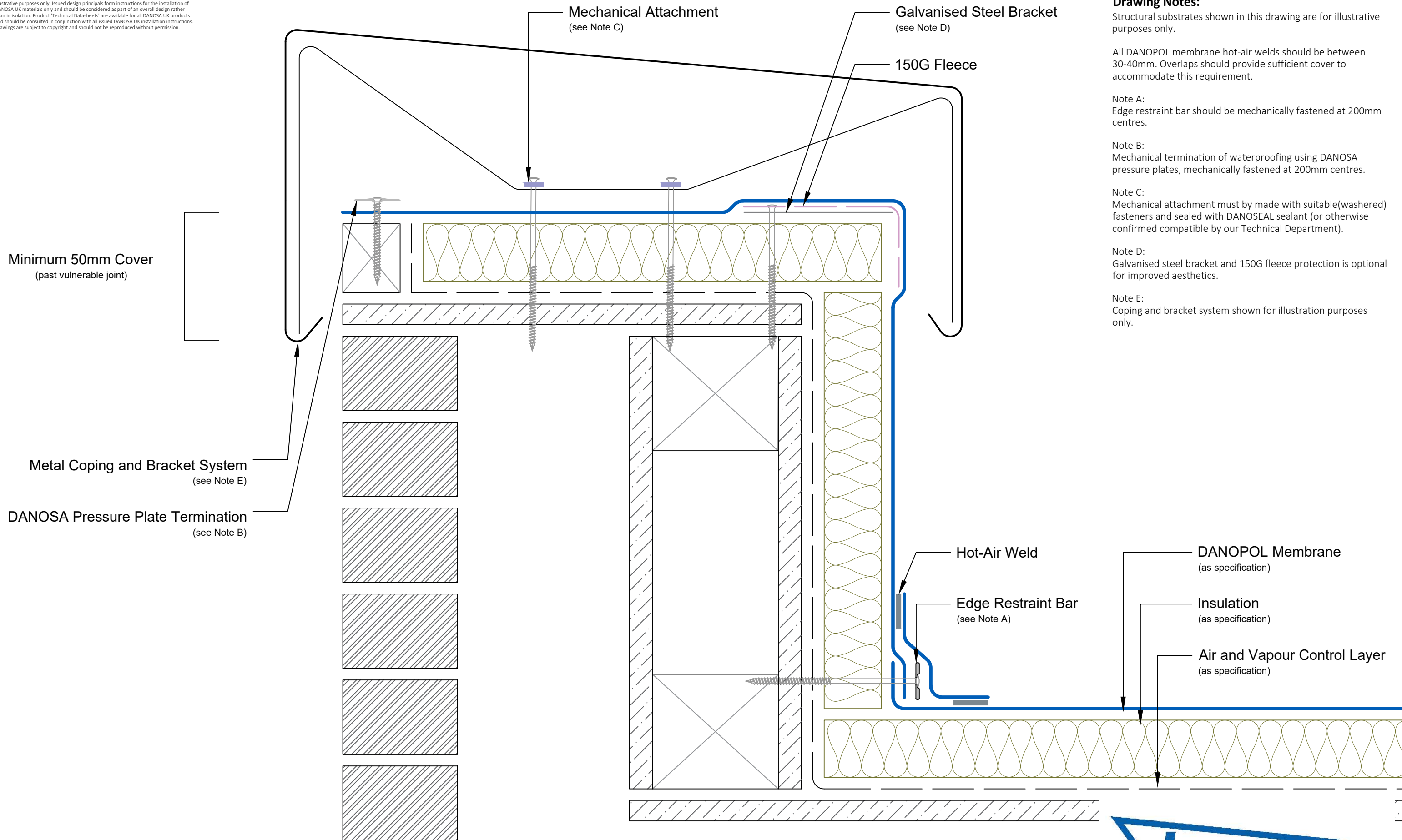


Disclaimer: Drawings produced by DANOSA UK should be considered non-scalable and for illustrative purposes only. Issued design principals form instructions for the installation of DANOSA UK materials only and should be considered as part of an overall design rather than in isolation. Product 'Technical Datasheets' are available for all DANOSA UK products and should be consulted in conjunction with all issued DANOSA UK installation instructions. Drawings are subject to copyright and should not be reproduced without permission.



Drawing Notes:

Structural substrates shown in this drawing are for illustrative purposes only.

All DANOPOL membrane hot-air welds should be between 30-40mm. Overlaps should provide sufficient cover to accommodate this requirement.

Note A: Edge restraint bar should be mechanically fastened at 200mm centres.

Note B: Mechanical termination of waterproofing using DANOSA pressure plates, mechanically fastened at 200mm centres.

Note C: Mechanical attachment must be made with suitable(washed) fasteners and sealed with DANOSEAL sealant (or otherwise confirmed compatible by our Technical Department).

Note D: Galvanised steel bracket and 150G fleece protection is optional for improved aesthetics.

Note E: Coping and bracket system shown for illustration purposes only.

Drawing Number: DUK-S-(M)-241W	Revision: 00
Date Drawn: March 2017	Author: SL

Drawing Title:
Parapet Kerb with Metal Coping
Mechanically Fastened Single Ply Membranes - Warm Roof

