

Disclaimer: Drawings produced by DANOSA UK should be considered non-scalable and for illustrative purposes only. Issued design principals form instructions for the installation of DANOSA UK materials only and should be considered as part of an overall design rather than in isolation. Product 'Technical Datasheets' are available for all DANOSA UK products and should be consulted in conjunction with all issued DANOSA UK installation instructions. Drawings are subject to copyright and should not be reproduced without permission.

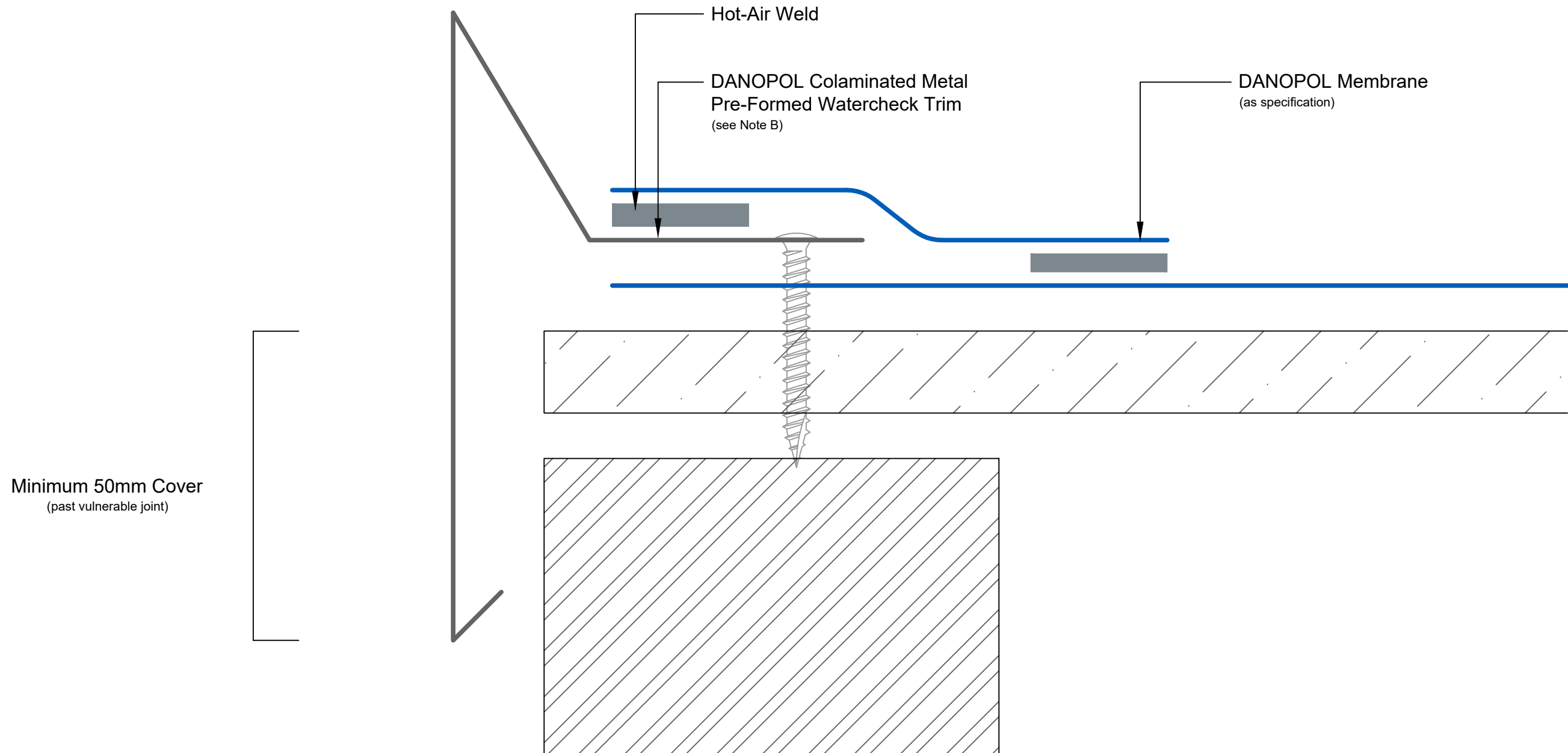
Drawing Notes:

Structural substrates shown in this drawing are for illustrative purposes only.

All DANOPOL membrane hot-air welds should be between 30-40mm. Overlaps should provide sufficient cover to accommodate this requirement.

Note A:

Trim to be mechanically fastened at 200mm centres. Various profiles can be fabricated to suit. Profile shown for illustrative purposes only.



Minimum 50mm Cover
(past vulnerable joint)

Drawing Number: DUK-S-(A)-222C	Revision: 00
Date Drawn: March 2017	Author: SL

Drawing Title:
DANOPOL Metal Watercheck Trim
Adhered Membranes - Cold Roof



DANOSA UK Limited

Tel: 0845 074 0553 | www.danosa.co.uk | uktechnical@danosa.com