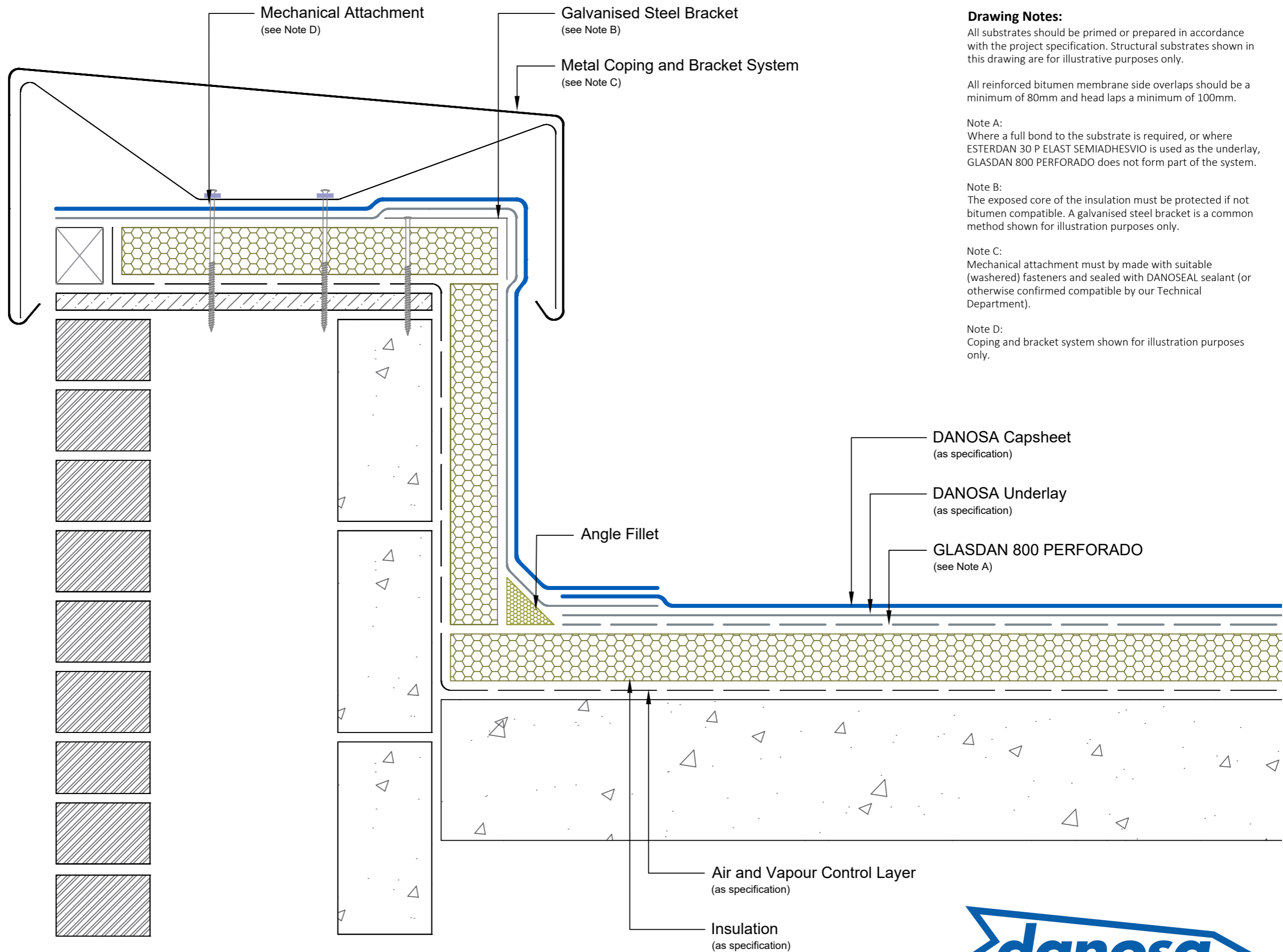


Disclaimer: Drawings produced by DANOSA UK should be considered non-scalable and for illustrative purposes only. Issued design principals form instructions for the installation of DANOSA UK materials only and should be considered as part of an overall design rather than in isolation. Product 'Technical Datasheets' are available for all DANOSA UK products and should be consulted in conjunction with all issued DANOSA UK installation instructions. Drawings are subject to copyright and should not be reproduced without permission.

Minimum 50mm Cover
(past vulnerable joint)



Drawing Notes:

All substrates should be primed or prepared in accordance with the project specification. Structural substrates shown in this drawing are for illustrative purposes only.

All reinforced bitumen membrane side overlaps should be a minimum of 80mm and head laps a minimum of 100mm.

Note A:
Where a full bond to the substrate is required, or where ESTERDAN 30 P ELAST SEMIADHESVIO is used as the underlay, GLASDAN 800 PERFORADO does not form part of the system.

Note B:
The exposed core of the insulation must be protected if not bitumen compatible. A galvanised steel bracket is a common method shown for illustration purposes only.

Note C:
Mechanical attachment must be made with suitable (washed) fasteners and sealed with DANOSEAL sealant (or otherwise confirmed compatible by our Technical Department).

Note D:
Coping and bracket system shown for illustration purposes only.

| | |
|--|------------------------|
| Drawing Number: DUK-B-(G)-241W | Revision: 01 |
| Date Drawn: February 2019 | Author: SL |

Drawing Title:
Parapet Kerb with Metal Coping
Reinforced Bitumen Membranes - Warm Roof



Building together

DANOSA UK Limited

Tel: 0845 074 0553 | www.danosa.co.uk | uktechnical@danosa.com