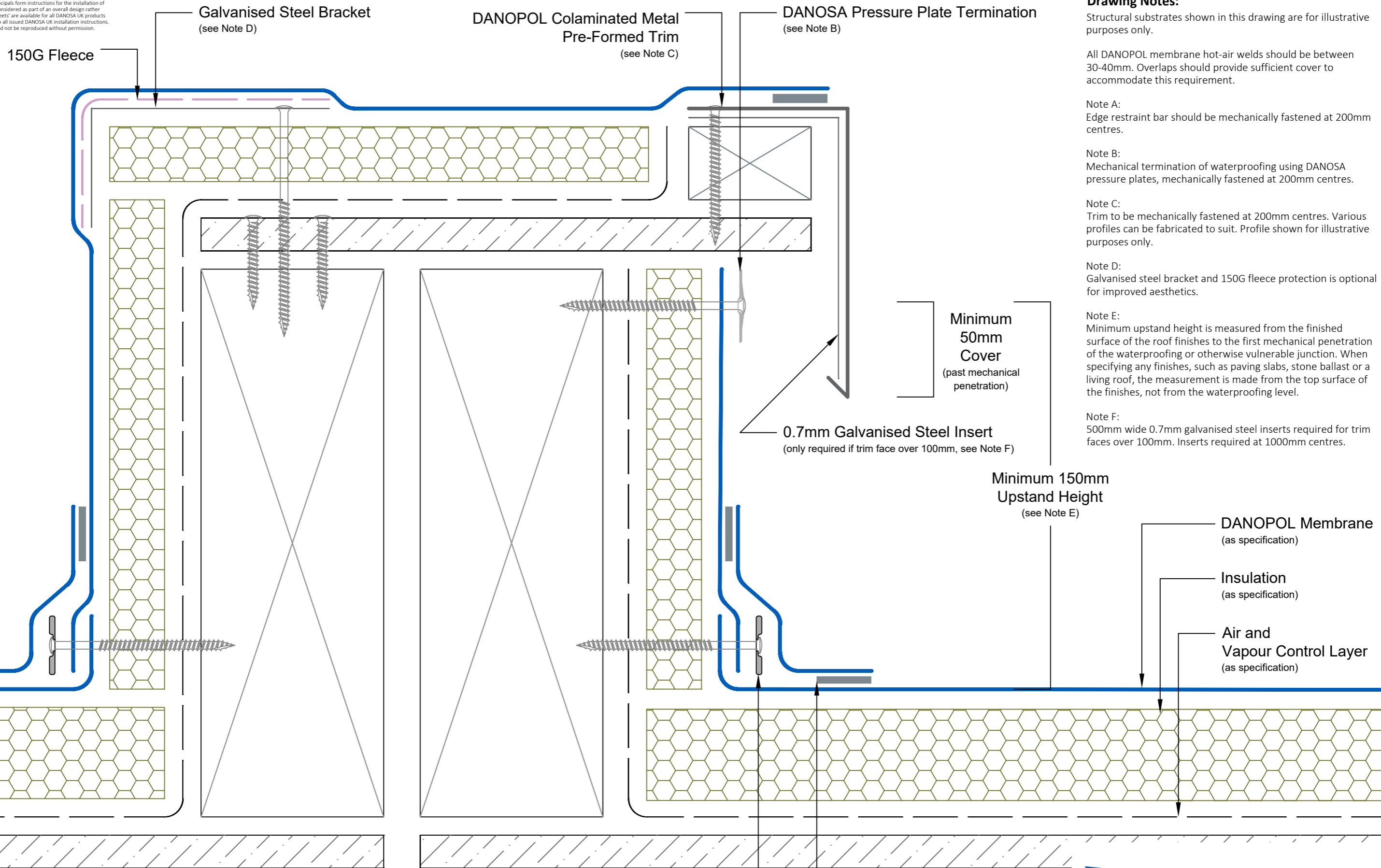


Disclaimer: Drawings produced by DANOSA UK should be considered non-scalable and for illustrative purposes only. Issued design principals form instructions for the installation of DANOSA UK materials only and should be considered as part of an overall design rather than in isolation. Product 'Technical Datasheets' are available for all DANOSA UK products and should be consulted in conjunction with all issued DANOSA UK installation instructions. Drawings are subject to copyright and should not be reproduced without permission.



Drawing Notes:
Structural substrates shown in this drawing are for illustrative purposes only.

All DANOPOL membrane hot-air welds should be between 30-40mm. Overlaps should provide sufficient cover to accommodate this requirement.

Note A:
Edge restraint bar should be mechanically fastened at 200mm centres.

Note B:
Mechanical termination of waterproofing using DANOSA pressure plates, mechanically fastened at 200mm centres.

Note C:
Trim to be mechanically fastened at 200mm centres. Various profiles can be fabricated to suit. Profile shown for illustrative purposes only.

Note D:
Galvanised steel bracket and 150G fleece protection is optional for improved aesthetics.

Note E:
Minimum upstand height is measured from the finished surface of the roof finishes to the first mechanical penetration of the waterproofing or otherwise vulnerable junction. When specifying any finishes, such as paving slabs, stone ballast or a living roof, the measurement is made from the top surface of the finishes, not from the waterproofing level.

Note F:
500mm wide 0.7mm galvanised steel inserts required for trim faces over 100mm. Inserts required at 1000mm centres.

Drawing Number: DUK-S-(M)-280W	Revision: 00
Date Drawn: March 2017	Author: SL

Drawing Title:
Expansion Kerb
Mechanically Fastened DANOPOL® Single Ply Membranes - Warm Roof



DANOSA UK Limited
Tel: 0845 074 0553 | www.danosa.co.uk | uktechnical@danosa.com