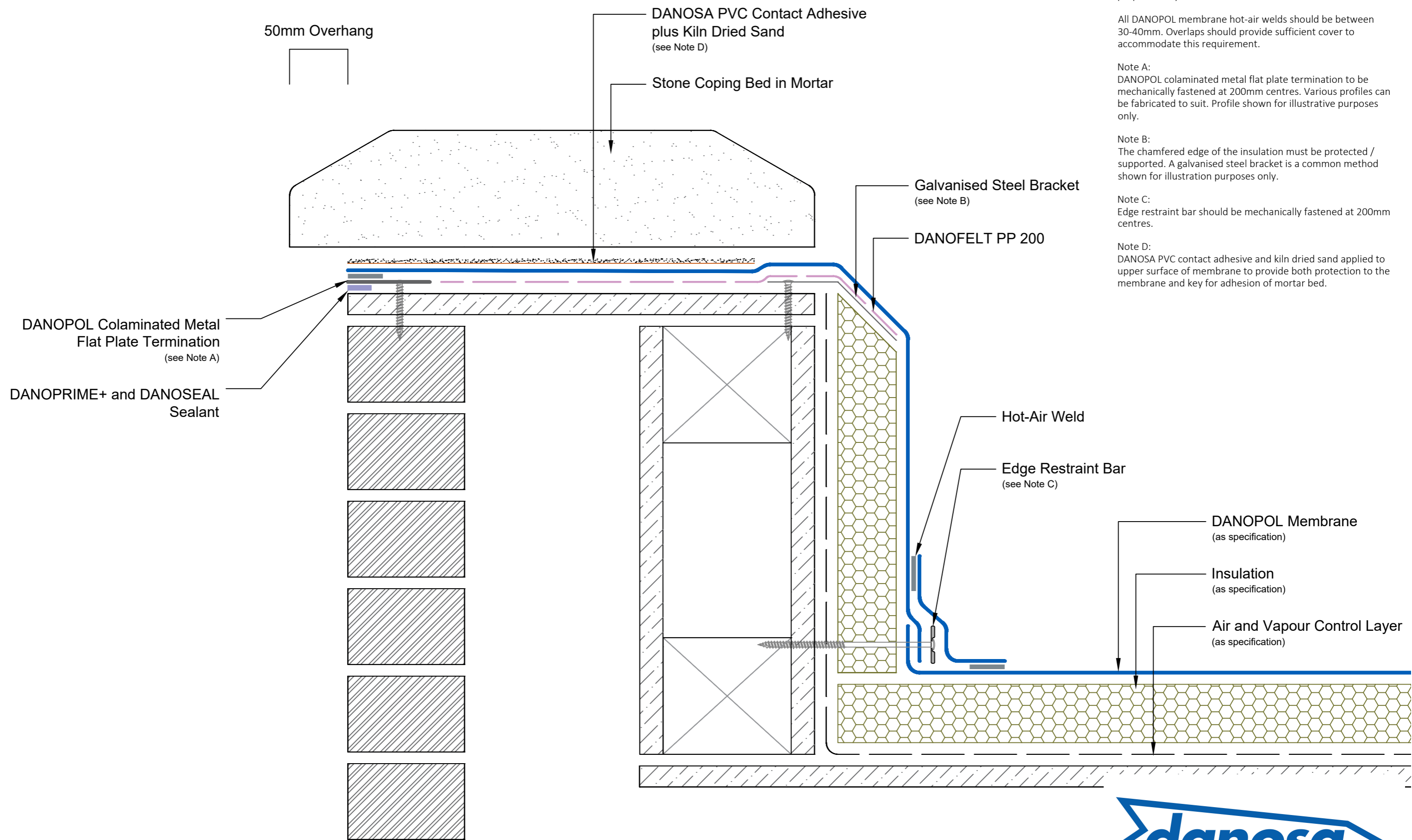


Disclaimer: Drawings produced by DANOSA UK should be considered non-scalable and for illustrative purposes only. Issued design principals form instructions for the installation of DANOSA UK materials only and should be considered as part of an overall design rather than in isolation. Product 'Technical Datasheets' are available for all DANOSA UK products and should be consulted in conjunction with all issued DANOSA UK installation instructions. Drawings are subject to copyright and should not be reproduced without permission.



Drawing Notes:

Structural substrates shown in this drawing are for illustrative purposes only.

All DANOPOL membrane hot-air welds should be between 30-40mm. Overlaps should provide sufficient cover to accommodate this requirement.

Note A: DANOPOL colaminated metal flat plate termination to be mechanically fastened at 200mm centres. Various profiles can be fabricated to suit. Profile shown for illustrative purposes only.

Note B: The chamfered edge of the insulation must be protected / supported. A galvanised steel bracket is a common method shown for illustration purposes only.

Note C: Edge restraint bar should be mechanically fastened at 200mm centres.

Note D: DANOSA PVC contact adhesive and kiln dried sand applied to upper surface of membrane to provide both protection to the membrane and key for adhesion of mortar bed.

Drawing Number: DUK-S-(M)-240W	Revision: 01
Date Drawn: February 2019	Author: SL

Drawing Title:
Parapet Kerb with Stone Coping
Mechanically Fastened DANOPOL® Single Ply Membranes - Warm Roof



Building together

DANOSA UK Limited

Tel: 0845 074 0553 | www.danosa.co.uk | uktechnical@danosa.com