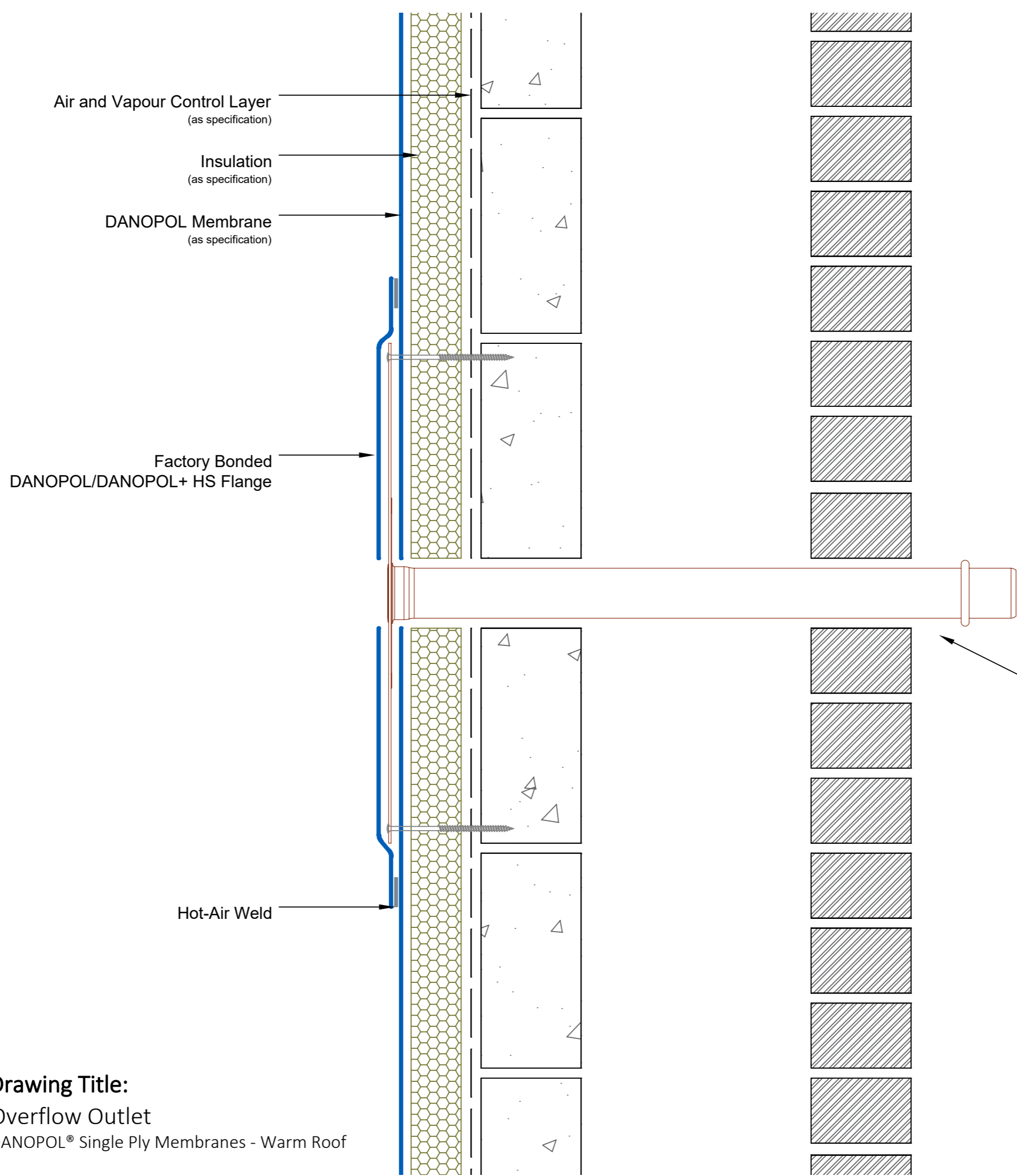


Disclaimer: Drawings produced by DANOSA UK should be considered non-scalable and for illustrative purposes only. Issued design principals form instructions for the installation of DANOSA UK materials only and should be considered as part of an overall design rather than in isolation. Product 'Technical Datasheets' are available for all DANOSA UK products and should be consulted in conjunction with all issued DANOSA UK installation instructions. Drawings are subject to copyright and should not be reproduced without permission.



Drawing Notes:

Structural substrates shown in this drawing are for illustrative purposes only.

All DANOPOL membrane hot-air welds should be between 30-40mm. Overlaps should provide sufficient cover to accommodate this requirement.

On most roof systems the overflow outlet should be no greater than 50mm above the finished surface of the waterproofing. Where level threshold details exist, the overflow outlet must be a minimum of 25mm below the underside of the door cill.

The underlying base plate measures 70mm from the external edge to the outlet aperture, so may need to be cut on site.

DANOSA overflow outlets are 50mm diameter and are supplied with a 600mm spigot.

Important Note:
External finishes fall outside of DANOSA specification.

Drawing Number: DUK-S-(G)-302W	Revision: 01
Date Drawn: January 2019	Author: SL

Drawing Title:
Overflow Outlet
DANOPOL® Single Ply Membranes - Warm Roof



Building together

DANOSA UK Limited

Tel: 0845 074 0553 | www.danosa.co.uk | uktechnical@danosa.com