

**Drawing Notes:**

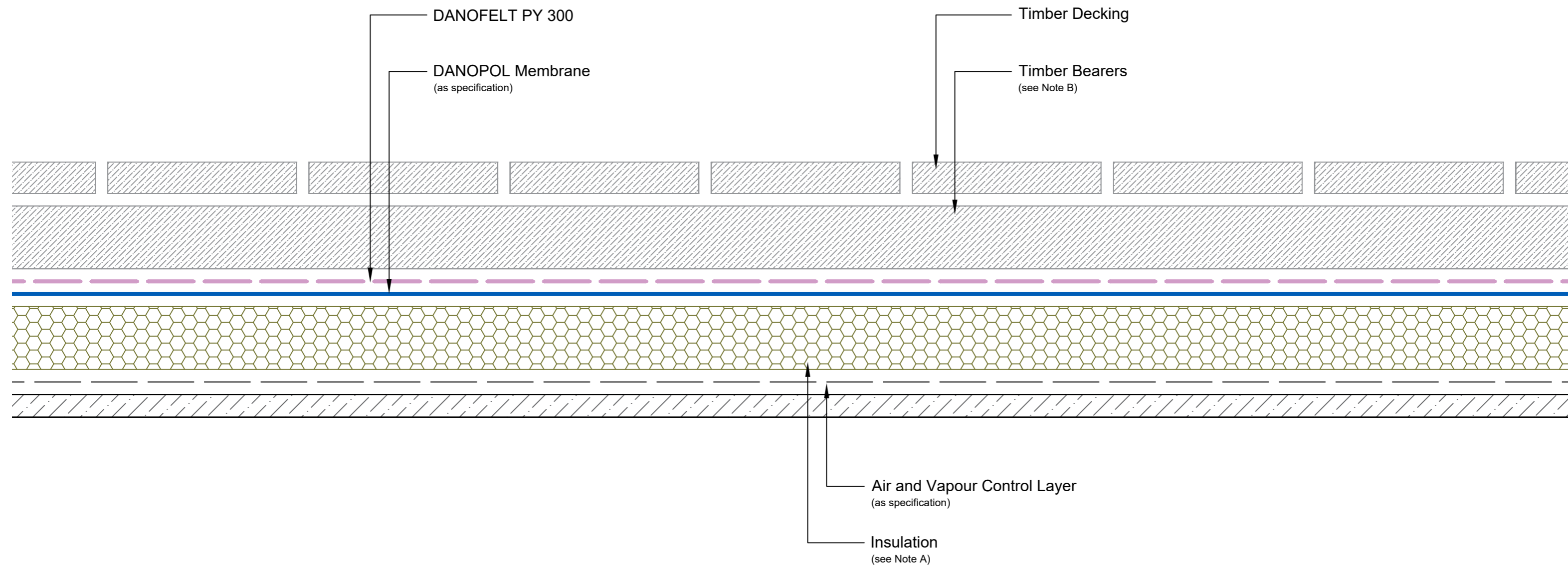
Structural substrates shown in this drawing are for illustrative purposes only.

**Note A:**

The selected insulation should be suitable to withstand the anticipated live and dead loadings. Compressive strength and compressive creep information is available on product Technical Datasheets.

**Note B:**

Timber bearers should be laid so that they do not inhibit free drainage of the roof system. If this cannot be avoided, then the bearers must sit on suitable support pads to allow free drainage underneath.



<b>Drawing Number:</b> DUK-S-(G)-203W	<b>Revision:</b> 00
<b>Date Drawn:</b> March 2017	<b>Author:</b> SL

**Drawing Title:**  
Typical Cross Section with Timber Decking  
DANOPOL® Single Ply Membranes - Warm Roof



**Building together**

**DANOSA UK Limited**

Tel: 0845 074 0553 | www.danosa.co.uk | uktechnical@danosa.com