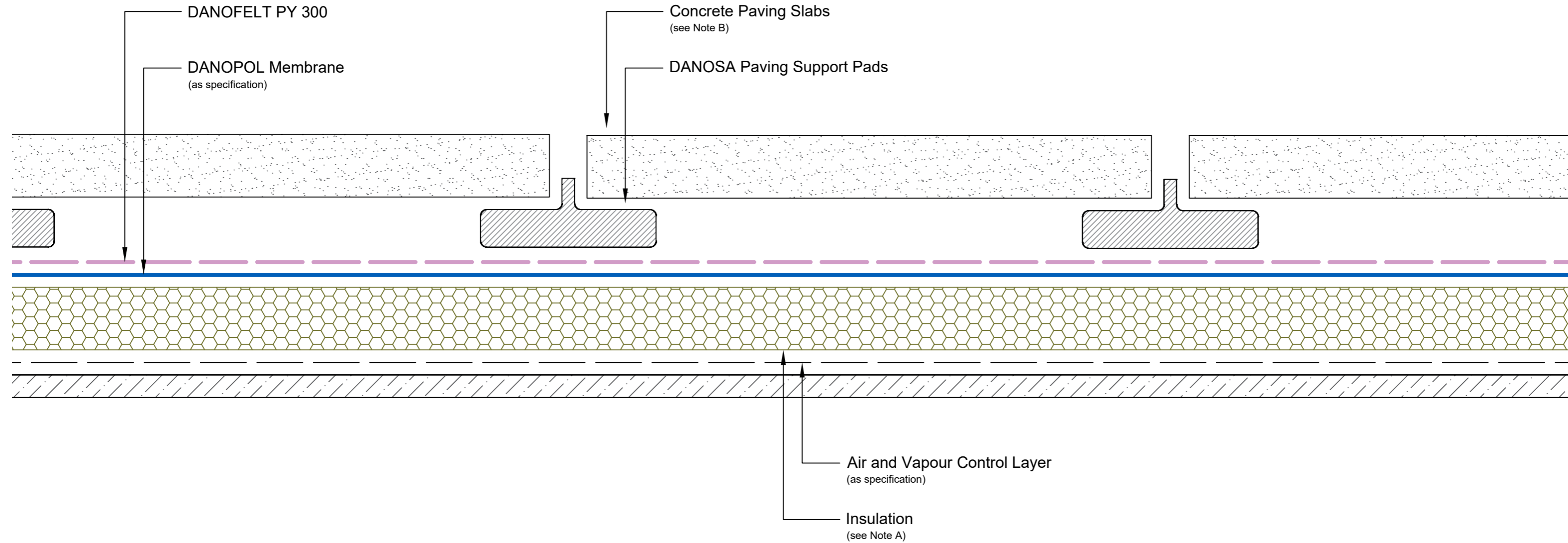


Drawing Notes:

Structural substrates shown in this drawing are for illustrative purposes only.

Note A:
The selected insulation should be suitable to withstand the anticipated live and dead loadings. Compressive strength and compressive creep information is available on product Technical Datasheets.

Note B:
Paving slabs should be a minimum 50mm thick.



Drawing Number: DUK-S-(G)-202W	Revision: 00
Date Drawn: March 2017	Author: SL

Drawing Title:
Typical Cross Section with Paving Slabs on Paving Support Pads
DANOPOL® Single Ply Membranes - Warm Roof



Building together

DANOSA UK Limited

Tel: 0845 074 0553 | www.danosa.co.uk | uktechnical@danosa.com