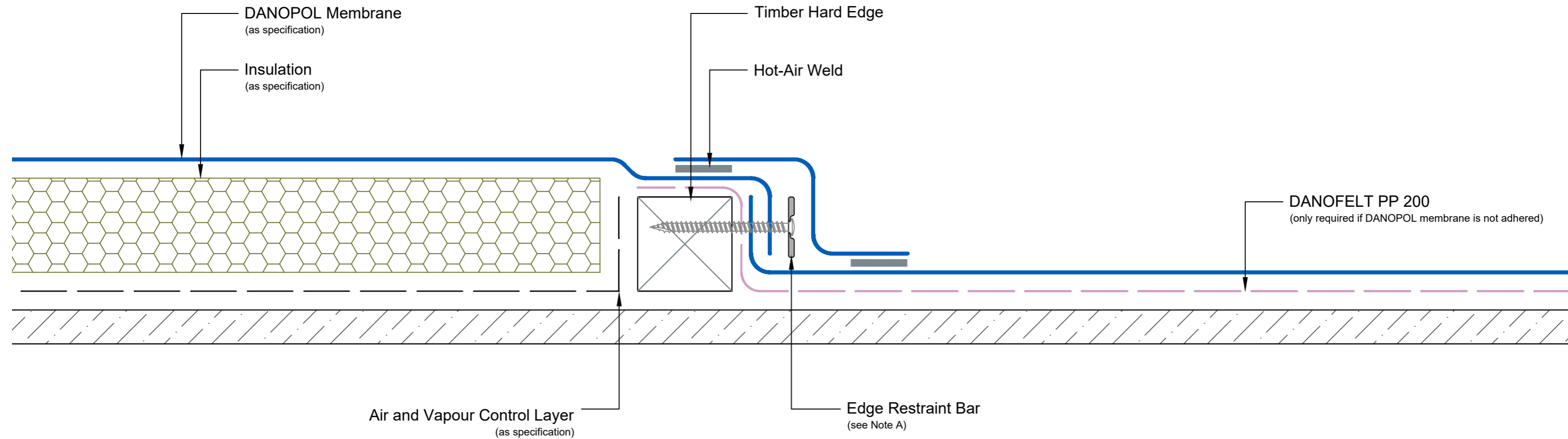


**Drawing Notes:**

Structural substrates shown in this drawing are for illustrative purposes only.

All DANOPOL membrane hot-air welds should be between 30-40mm. Overlaps should provide sufficient cover to accommodate this requirement.

Note A:  
Edge restraint bar should be mechanically fastened at 200mm centres.



<b>Drawing Number:</b> DUK-S-(G)-130	<b>Revision:</b> 00
<b>Date Drawn:</b> March 2017	<b>Author:</b> SL

**Drawing Title:**  
Warm Roof to Cold Roof with Timber Hard Edge  
DANOPOL® Single Ply Membranes



**Building together**

**DANOSA UK Limited**

Tel: 0845 074 0553 | [www.danosa.co.uk](http://www.danosa.co.uk) | [uktechnical@danosa.com](mailto:uktechnical@danosa.com)