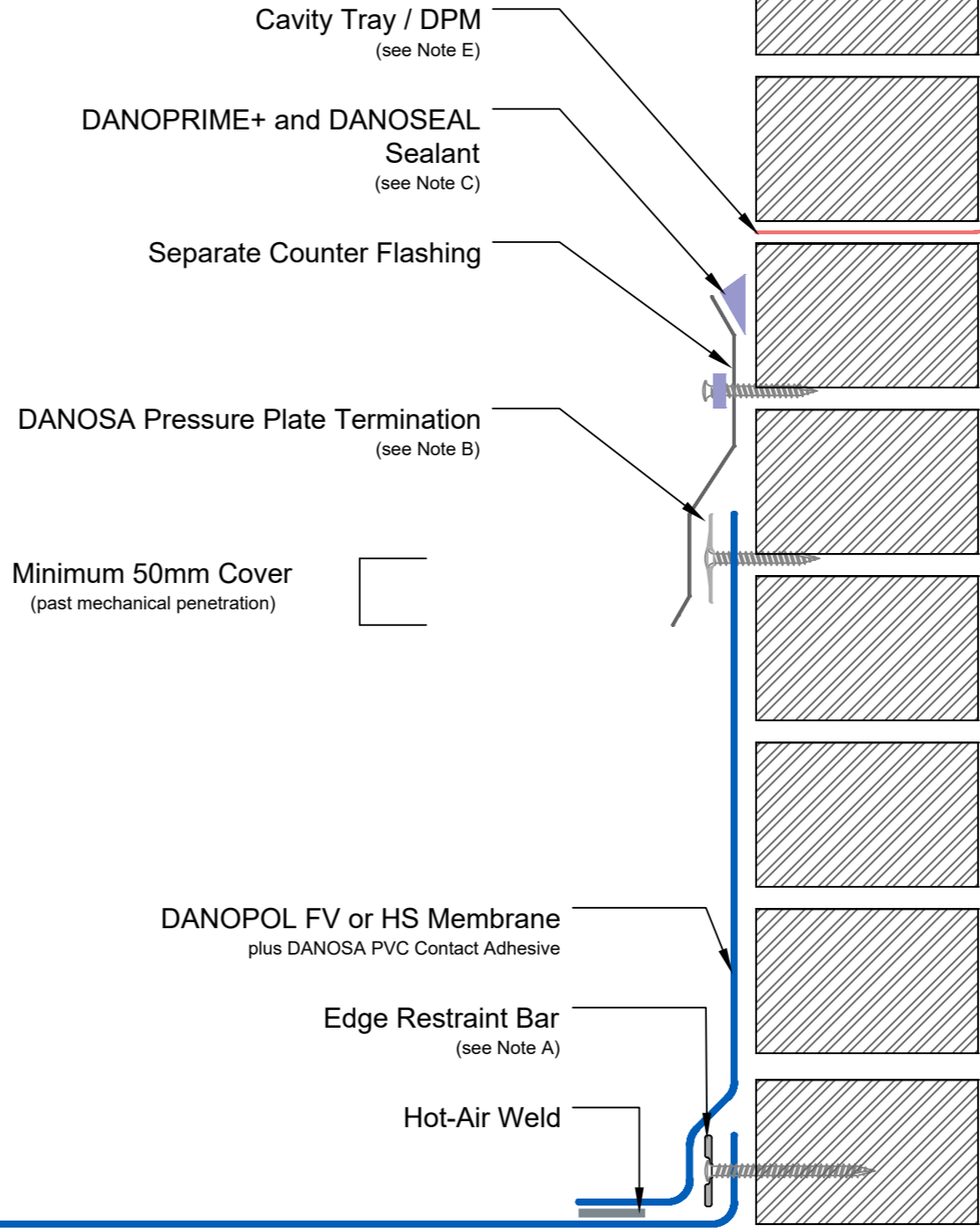


Disclaimer: Drawings produced by DANOSA UK should be considered non-scalable and for illustrative purposes only. Issued design principals form instructions for the installation of DANOSA UK materials only and should be considered as part of an overall design rather than in isolation. Product 'Technical Datasheets' are available for all DANOSA UK products and should be consulted in conjunction with all issued DANOSA UK installation instructions. Drawings are subject to copyright and should not be reproduced without permission.



Drawing Notes:

Structural substrates shown in this drawing are for illustrative purposes only.

All DANOPOL membrane hot-air welds should be between 30-40mm. Overlaps should provide sufficient cover to accommodate this requirement.

Note A:
Edge restraint bar should be mechanically fastened at 200mm centres.

Note B:
Mechanical termination of waterproofing using DANOSA pressure plates, mechanically fastened at 200mm centres.

Note C:
Sealants are considered maintenance items and should be checked and replaced regularly as part of annual roof maintenance procedures.

Note D:
Minimum upstand height is measured from the finished surface of the roof finishes to the first mechanical penetration of the waterproofing or otherwise vulnerable junction. When specifying any finishes, such as paving slabs, stone ballast or a living roof, the measurement is made from the top surface of the finishes, not from the waterproofing level.

Note E:
The cavity tray / DPM must discharge over the top of any lead counterflashing,

Drawing Number: DUK-S-(A)-323C	Revision: 00
Date Drawn: March 2017	Author: SL

Drawing Title:
Abutment with Separate Counterflashing
Adhered DANOPOL® Single Ply Membranes - Cold Roof



Building together

DANOSA UK Limited

Tel: 0845 074 0553 | www.danosa.co.uk | uktechnical@danosa.com